

Check your TAN details from www.incometaxindia.gov.in
Like the following
Your organization name should be as registered in TAN Details

TAN Details	
TAN	BBNO00549D
Category of Deductor	Central/State Government
Name	ORISSA GEO SPATIAL DATA CENTRE
	SURVEY BHAWAN
Address	PO R R LAB
	ORISSA BHUBANESWAR 751013
PAN	
STATUS	Active
E-Mail ID1	
E-Mail ID2	
TAN AO Code	
Area Code	BBN
AO Type	WT
Range Code	12
AO Number	11

TIN - Tax Identification Number

TAN - Tax Account deduction Number

TAN:- BBNO00549D

AIN:-1037220 (ACCOUNTS OFFICER IDENTIFICATION NUMBER)

<http://incometaxindia.gov.in/>

DDO REGISTRATION:- CGV003561B

DDO CODE:- 8279000

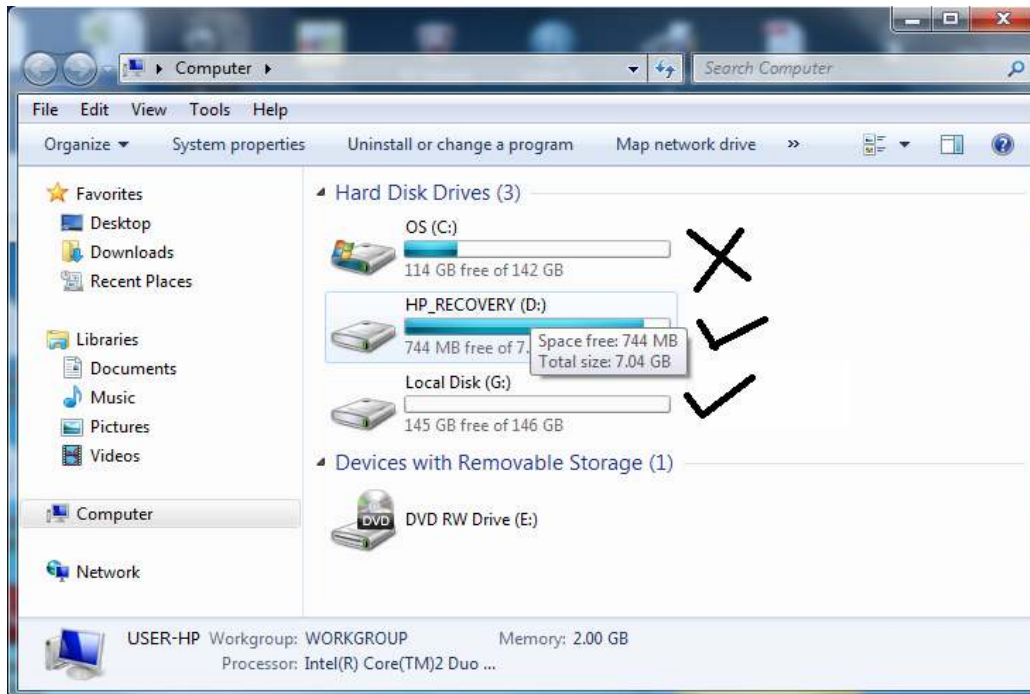
HOW TO DOWNLOAD 24G PREPARATION UTILITY

Visit www.tin-nsdl.com

First Create the following folder

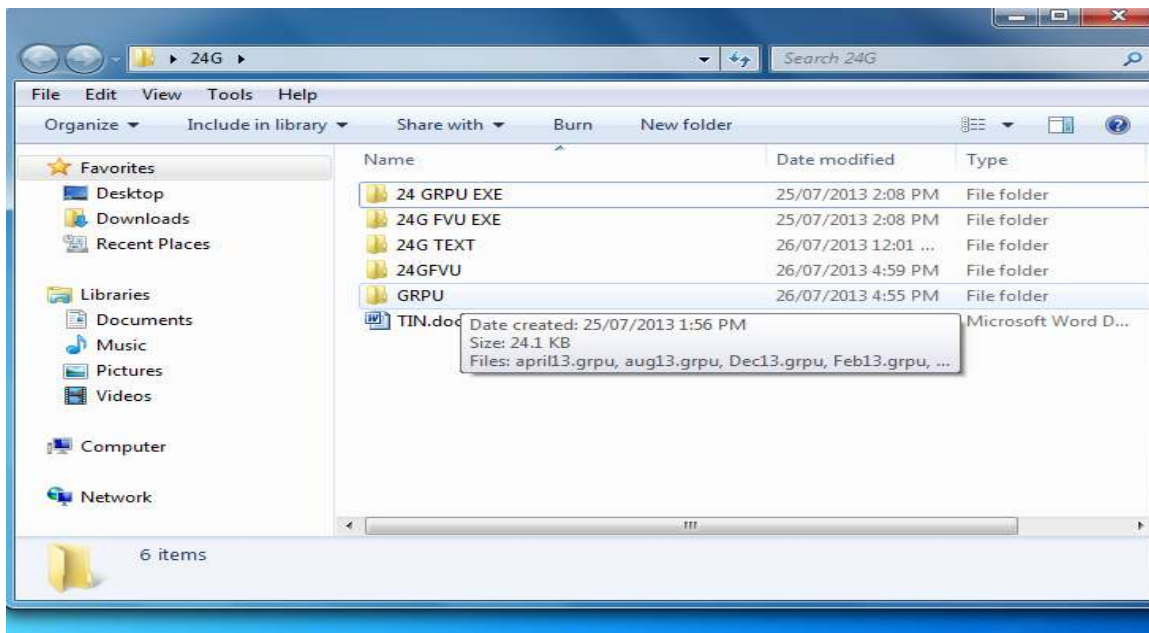


In



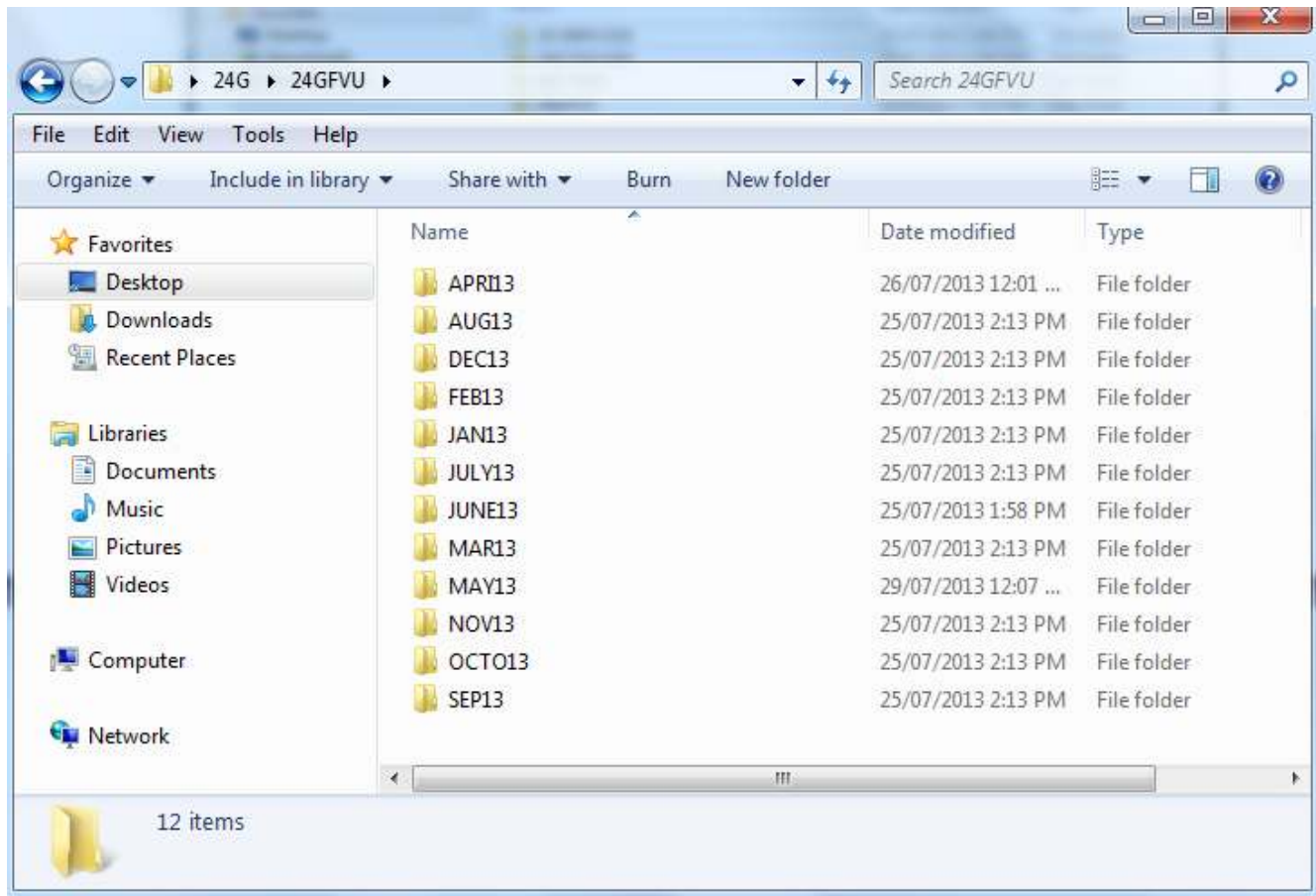
Next >>>>

Create under mentioned folder in 24G Folder



Next>>>

Then Create undermentioned Folders in 24GFVU Folder for keeping the Fvu files i.e. final 24G Returns files month wise.



Step-1



STEP-2

The screenshot shows the IRS website's 'Download / Form 24G' page. On the left, there is a sidebar with links for 'Correction on Form 24G Statement', 'BIN View', 'Procedure to obtain duplicate copy of Provisional Receipt number', and 'FAQ'. Below this is a 'Download' section with a 'Select' dropdown menu. A 'CUSTOMER CARE' banner is also present. The main content area lists several download options:

- **All Application Form**
- **Data Structure**
- **Form 24G File Format version 1.2** (Sample file prepared as per file format)
- **Sample file**
- **NSDL Form 24G Preparation Utility** (An arrow points to this link with the text **CLICK HERE**)
- **Form 24G Preparation Utility Version 1.20** (An arrow points to this link with the text **CLICK HERE**)
- **Feedback Form**

The page explains that the Form 24G FVU setup consists of two files:

- **Form 24G FVU.bat**: This is a setup program for installation of FVU.
- **Form 24G_FVU_STANDALONE.jar**: This is the FVU program file.

These files are in an executable zip file (Form24GFVU.exe). These files are required for installing the Form 24G FVU.

Additional links include:

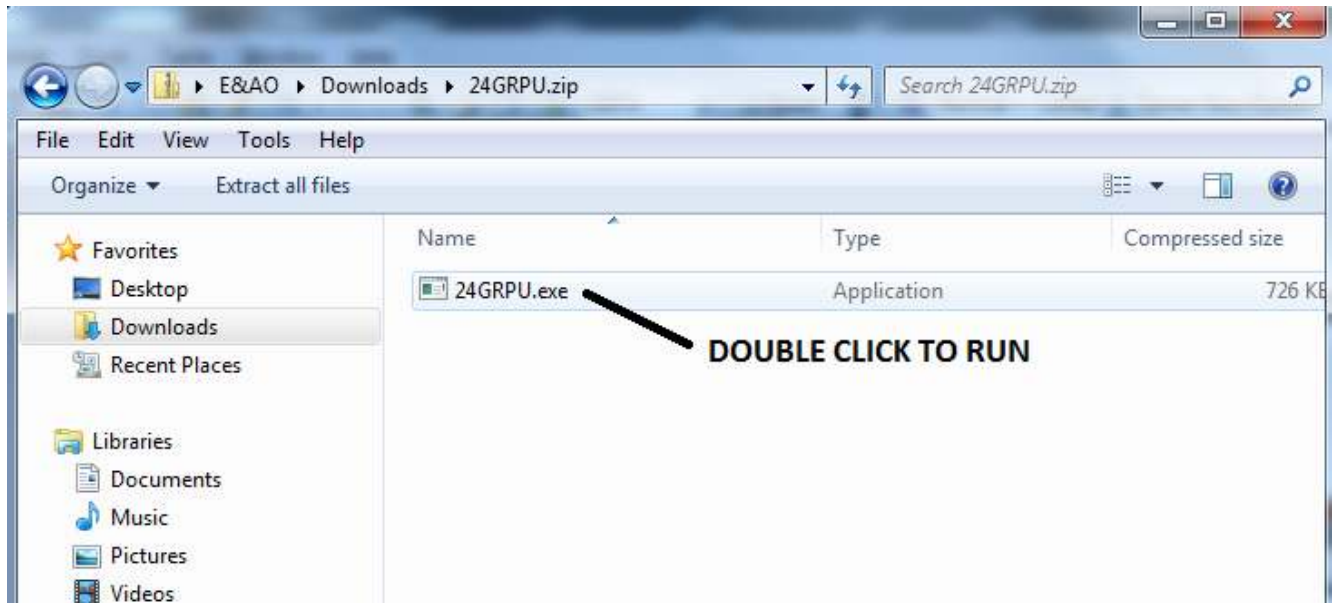
- **Form 24G FVU.exe (version 1.20)** (An arrow points to this link with the text **ALSO CLICK HERE**)

Instructions for extracting and setup are given in:

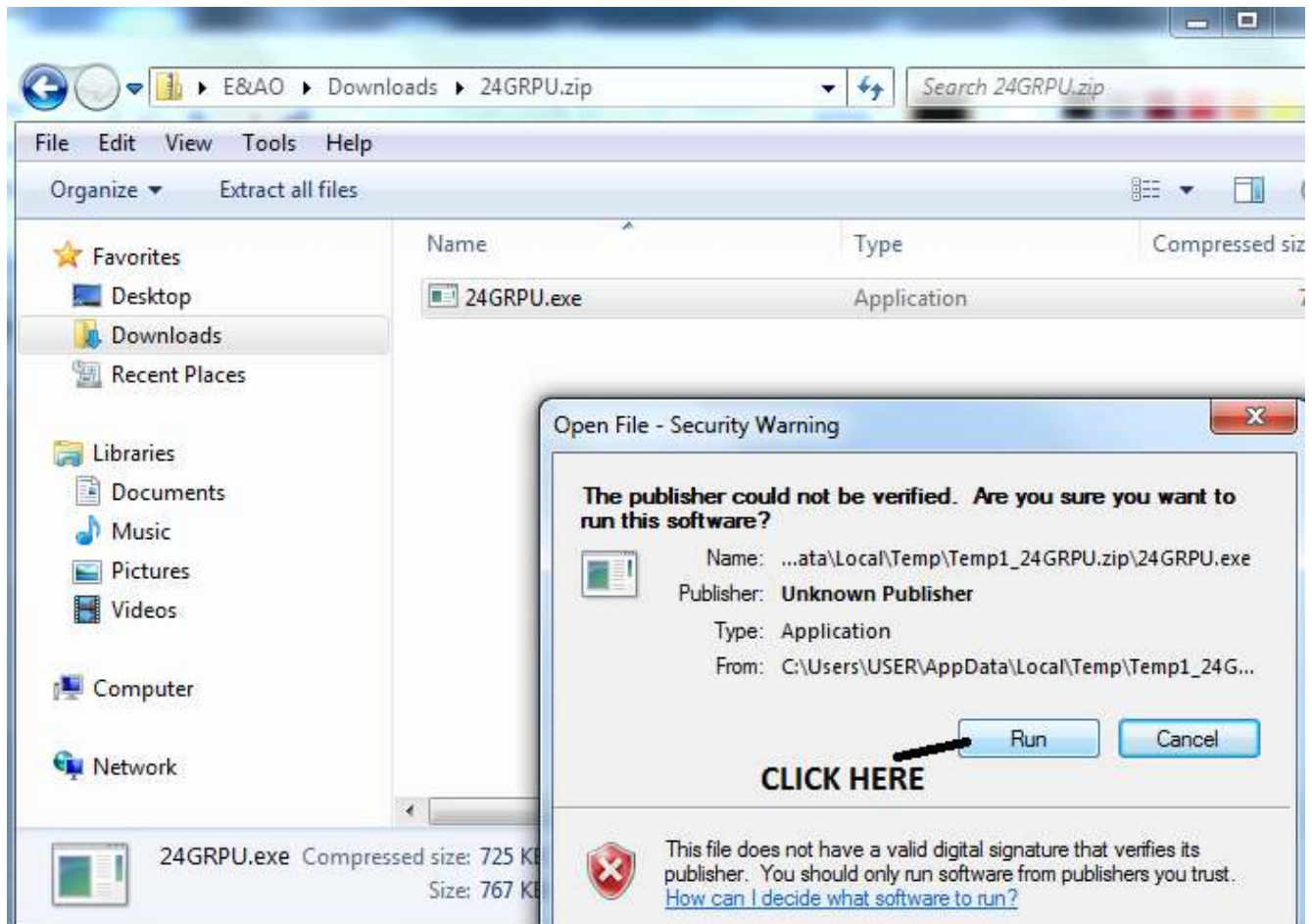
STEP-3

The screenshot shows a Windows File Explorer window titled 'E&AO > Downloads'. The left sidebar shows the 'Downloads' folder selected. The main pane displays several folders: 'Compressed', 'Documents', 'Music', 'Programs', 'Video', and '24GRPU.zip'. The '24GRPU.zip' file is highlighted with a blue selection box. An arrow points to this file with the text **DOUBLE CLICK TO UNZIP FILES**. Another arrow points to the 'Form24GFVU.zip' file with the text **DOUBLE CLICK TO UNZIP FILES**. The status bar at the bottom shows the details for '24GRPU.zip': 'Compressed (zipped) Folder', 'Date modified: 26/07/2013 5:16 PM', and 'Size: 725 KB'.

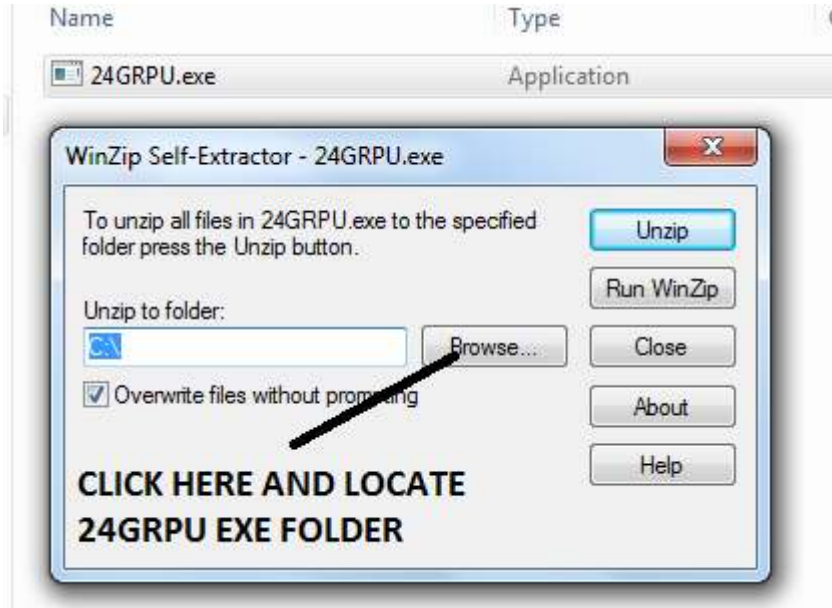
STEP-4



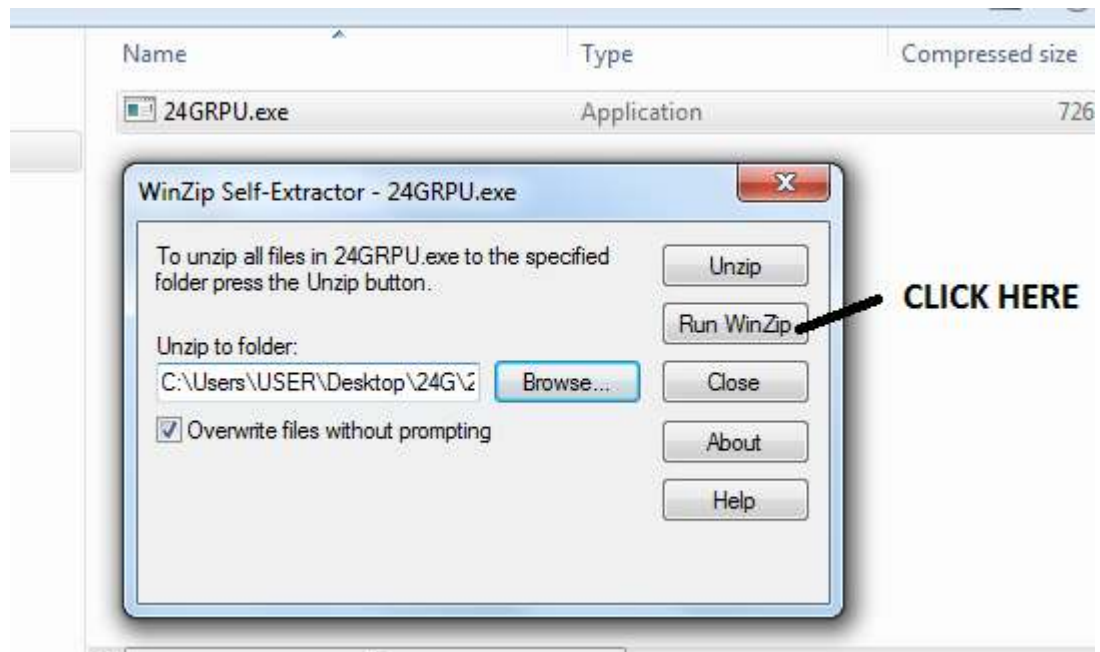
STEP-5



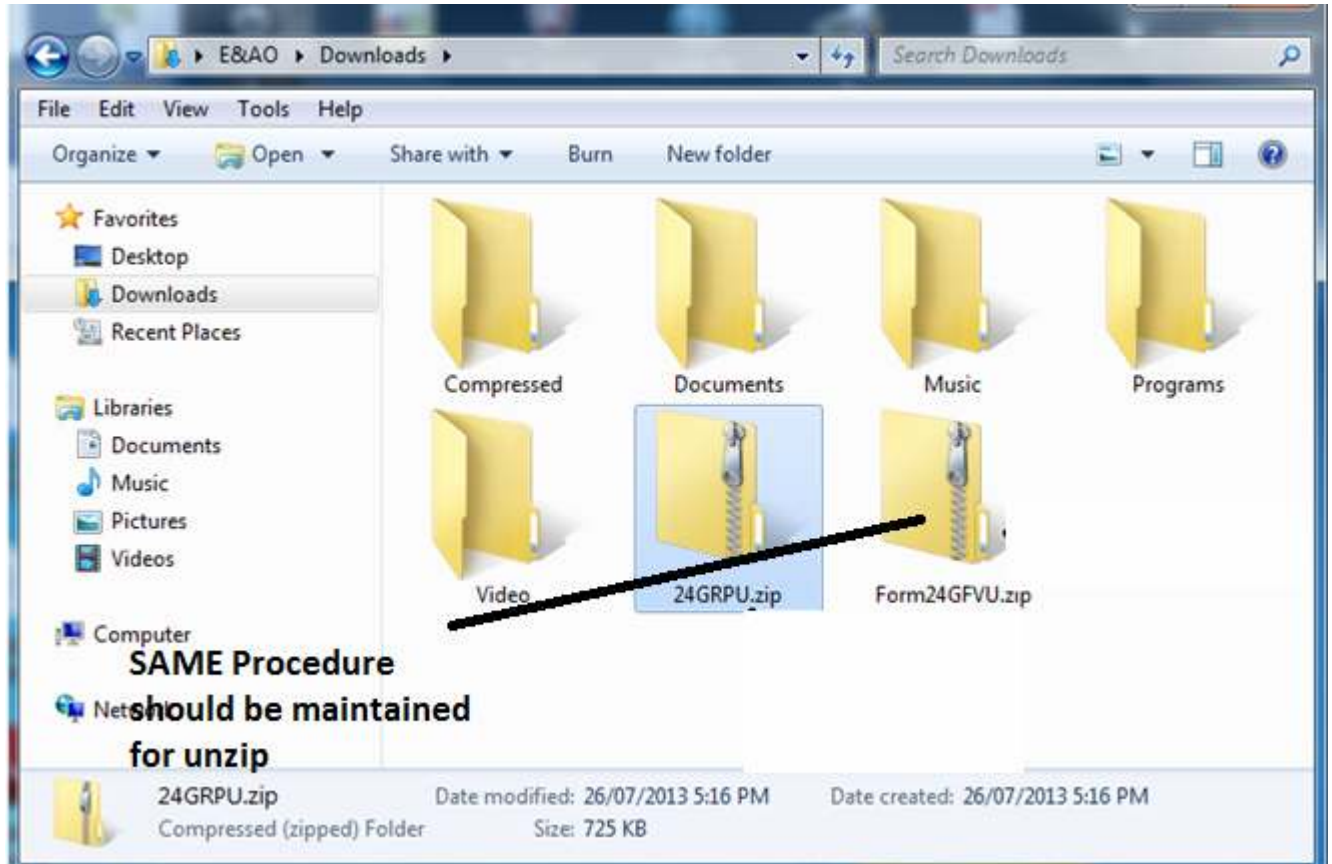
STEP-6



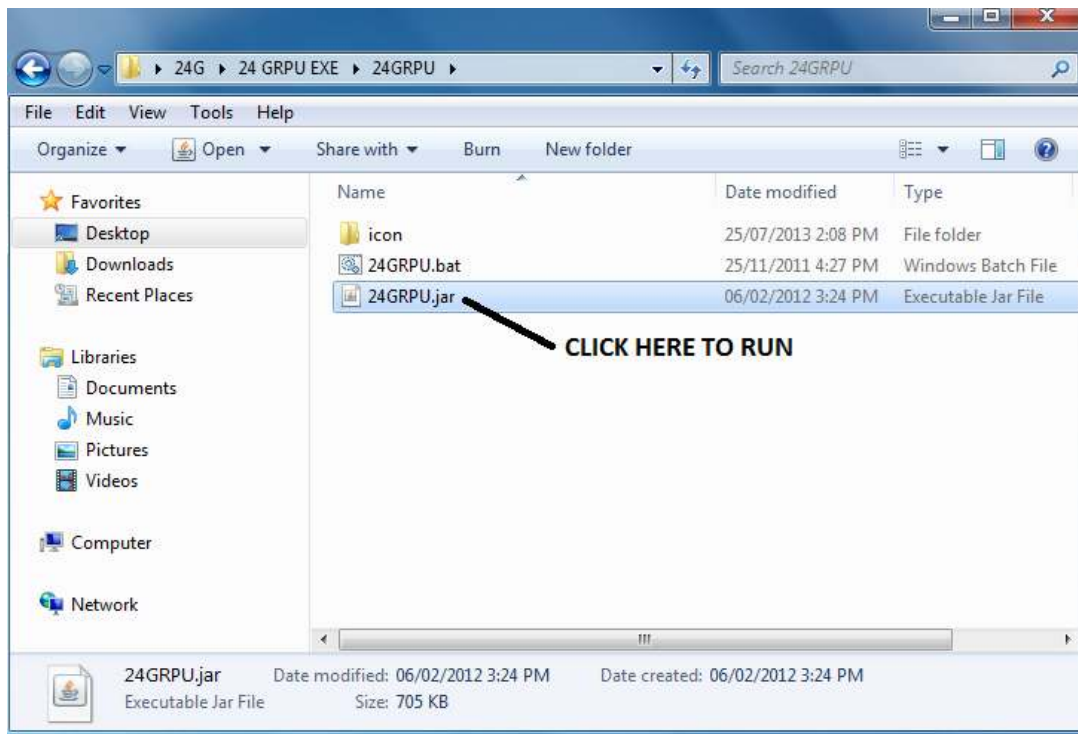
STEP-7



STEP-8



STEP-9



STEP-10

NSDL Monthly Form 24G Return Preparation Utility (RPU) for FY 2005-06 onwards

Select type of Statement to be prepared.

Original

CLICK HERE FOR
ORIGINAL RETURN

Correction

Click to Continue

THEN CLICK TO
CONTINUE

STEP-11

Form 24G Preparation Utility Version 1.2

File Edit Help

Statement Details DDO Details

Particulars of Statement

Type of Statement Original Type Of Correction PAGESlect--

Receipt No. of Original Statement Receipt No. of Previous Statement

Accounts Office Identification Number (AIN) *

Financial Year * --Select--

Month * --Select--

Details of Accounts Office

Accounts Office Name *

Address Line 1 * City *

Address Line 2 State/UT * --Select--

Address Line 3 Pin Code *

Address Line 4 STD Code * Phone No. *

Email ID *

Account Office Registration Number

FILL UP REQUIRED
DETAILS IN BOTH
PAGES

Fill up important Data

Then Save the file in a specific folder

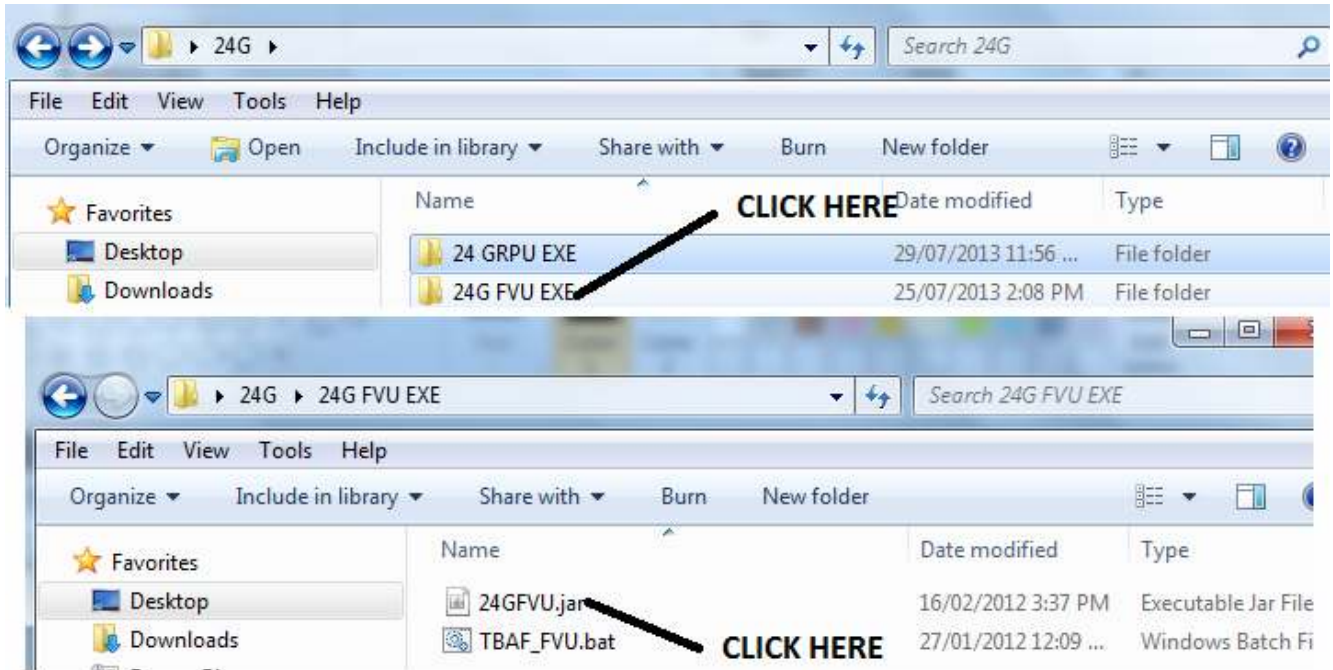
The file will be saved as 24grpu13.grpu

Reopen the file 24gapr13.grpu through 24GRPU.JAR

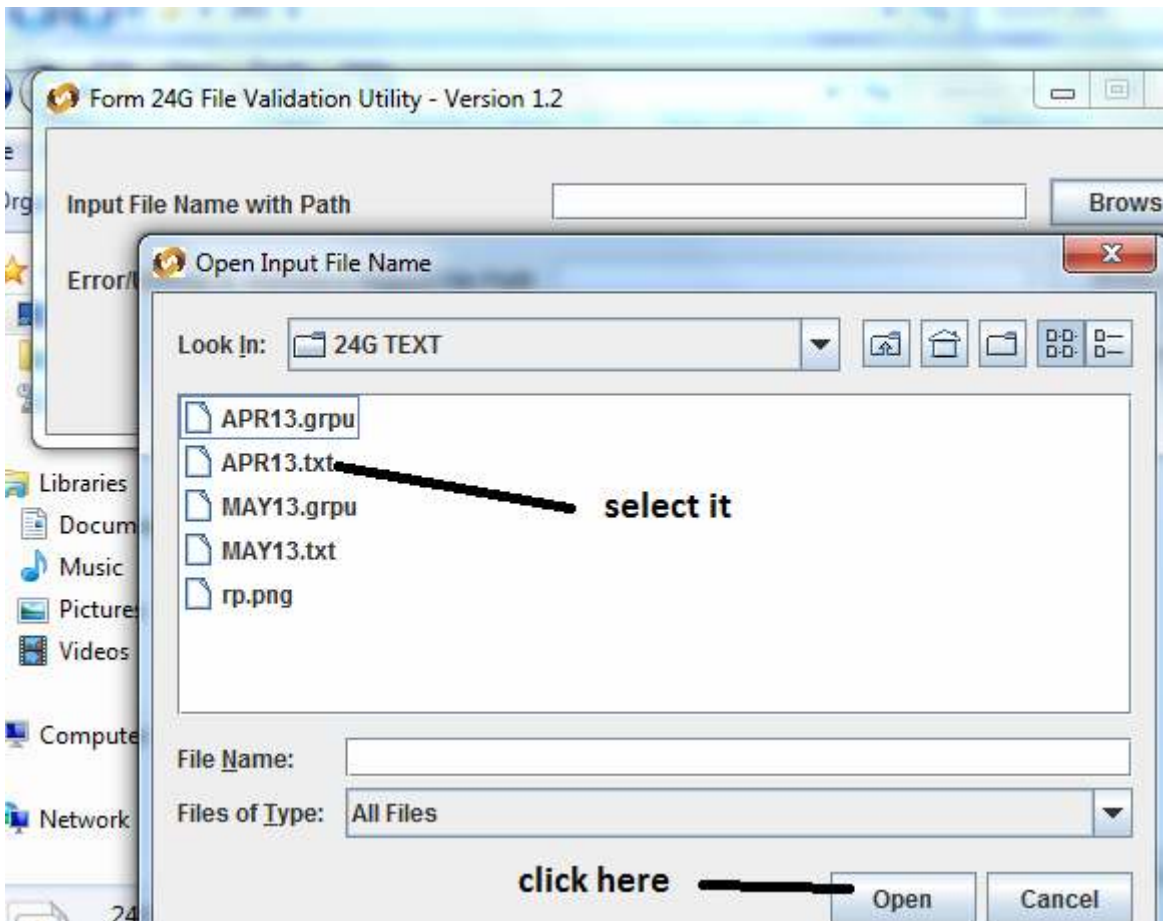
THEN CLICK CREATE FILE

IT WILL GENERATE 24GAPR13.TXT

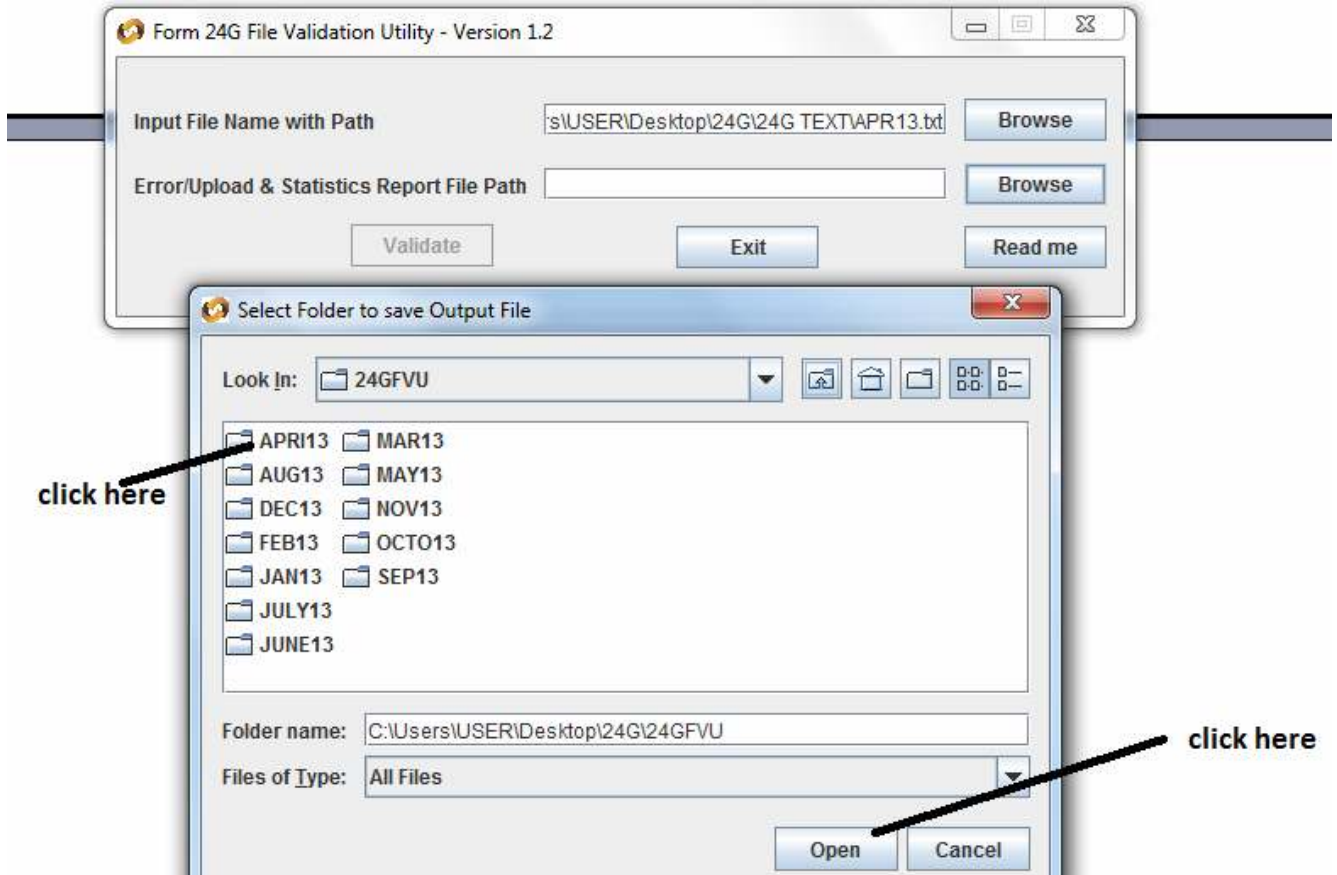
VALIDATION OF TEXT FILE



NEXT STEP



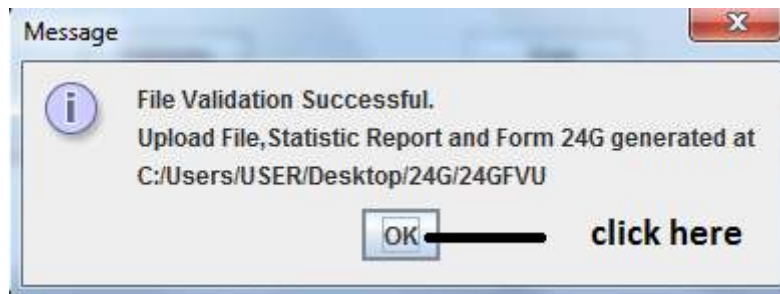
NEXT>>>



NEXT>>>

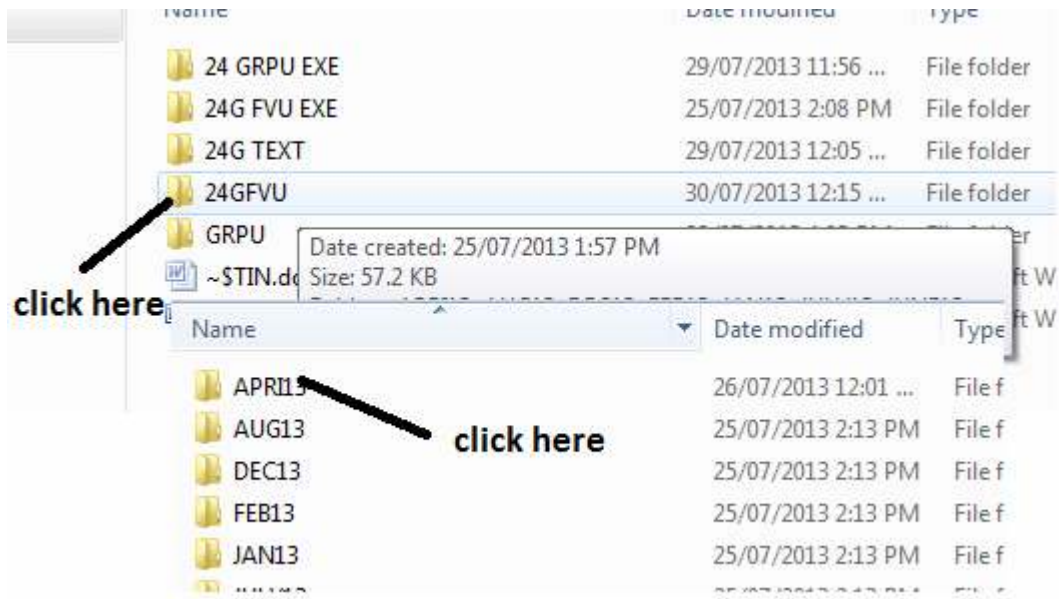


NEXT>>>

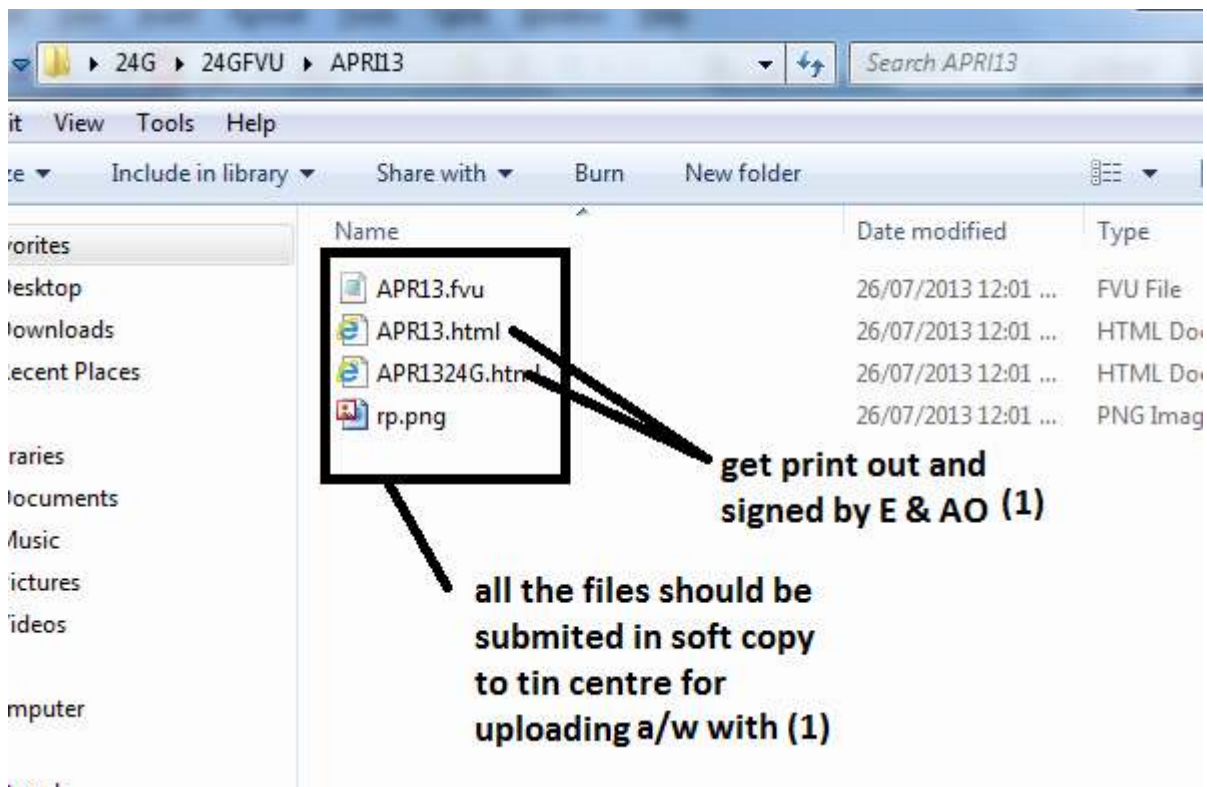


Then go to 24G folder – open

NEXT>>>




NEXT>>>



For any queries please call A. Basu at (m) 9088016240

PAN / TAN VERIFICATION

incometaxindia.gov.in/home.asp



Income Tax Department
Department of Revenue, Ministry of Finance, Government of India

About Us ▾ Tax Law and R

PAN [click here to verify PAN](#)

TAN [click here to verify TAN](#)

TDS

Whats New?




PAN [About PAN](#)

TAN [Know Your PAN](#) **CLICK HERE**

TDS [Online PAN Verification](#)

[Status of PAN](#)

Know Your PAN



Date of Birth/Incorporation (DD/MM/YYYY) *	<input type="text"/>	
Surname *	<input type="text"/>	
Middle Name	<input type="text"/>	
First Name	<input type="text"/>	
Captcha Code	<hr/>	
Image		
Enter the number as in above image *	<input type="text"/>	
<input type="button" value="Submit"/> <input type="button" value="Cancel"/>		

TAN VERIFICATION

PAN		
TAN		Know your TAN CLICK HERE
		Apply For TAN

Downloads ▾ News & Updates

Know Your TAN

Category of Deductor *	Select ▾
State *	Select ▾
Search *	<input checked="" type="radio"/> Name <input type="radio"/> TAN (e.g. DELA02603G)
Name *	<input type="text"/>
Captcha Code	
Image	 
Enter the number as in above image *	<input type="text"/>
<input type="button" value="Submit"/> <input type="button" value="Cancel"/>	